

# Microsoft Vista and Word 2007

Assessing Their Impact on the  
Editorial Office

allen★press

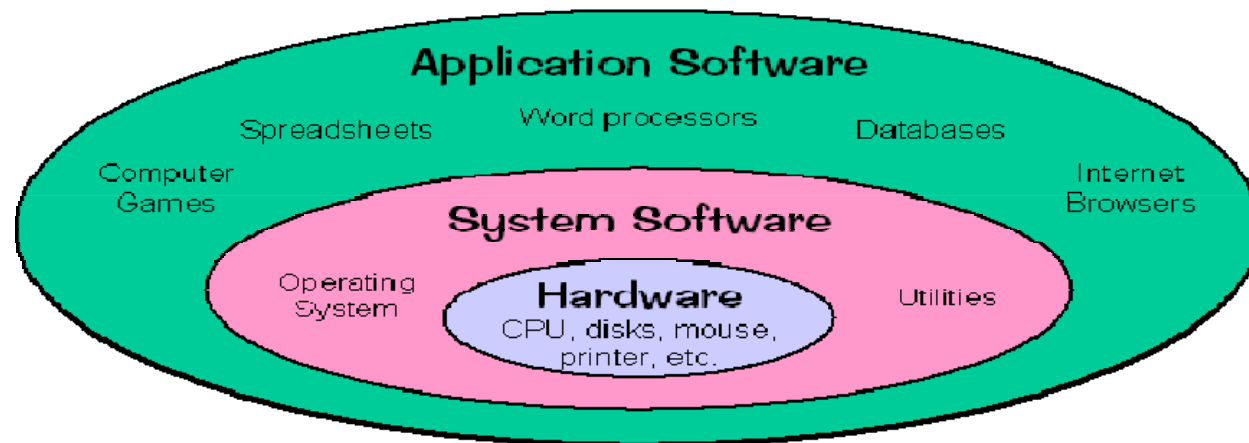


# Outline

- Overview of Vista
  - Design and Features
- Overview of Word 2007
  - Text
  - Math
  - Industry Assessment
- Questions

# Vista

- Vista is an Operating System
  - An **operating system (OS)** is a set of computer programs that manage the hardware and software resources of a computer.





## Vista has a much improved search function

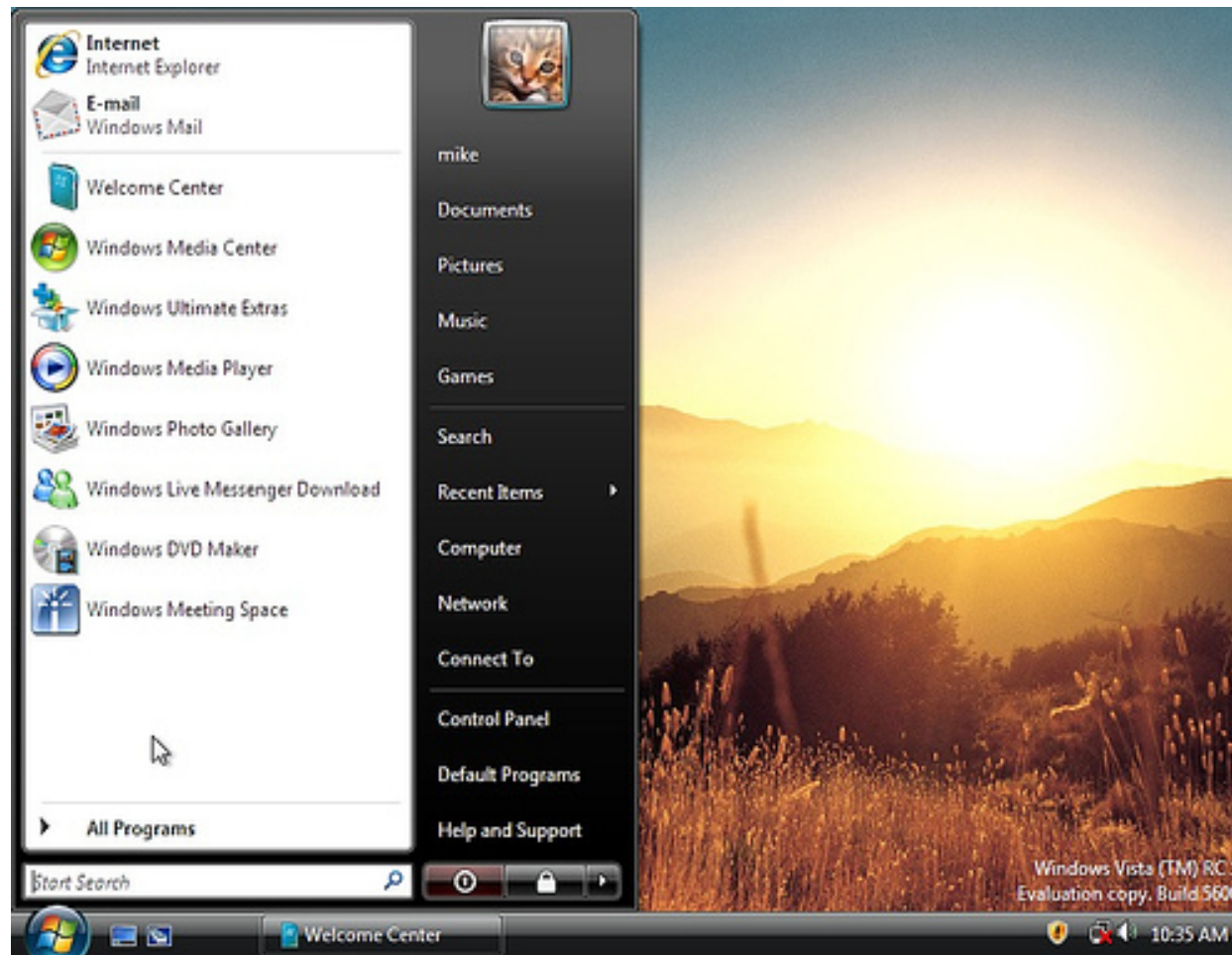


Image 2006, by mike3k

# Vista and Security

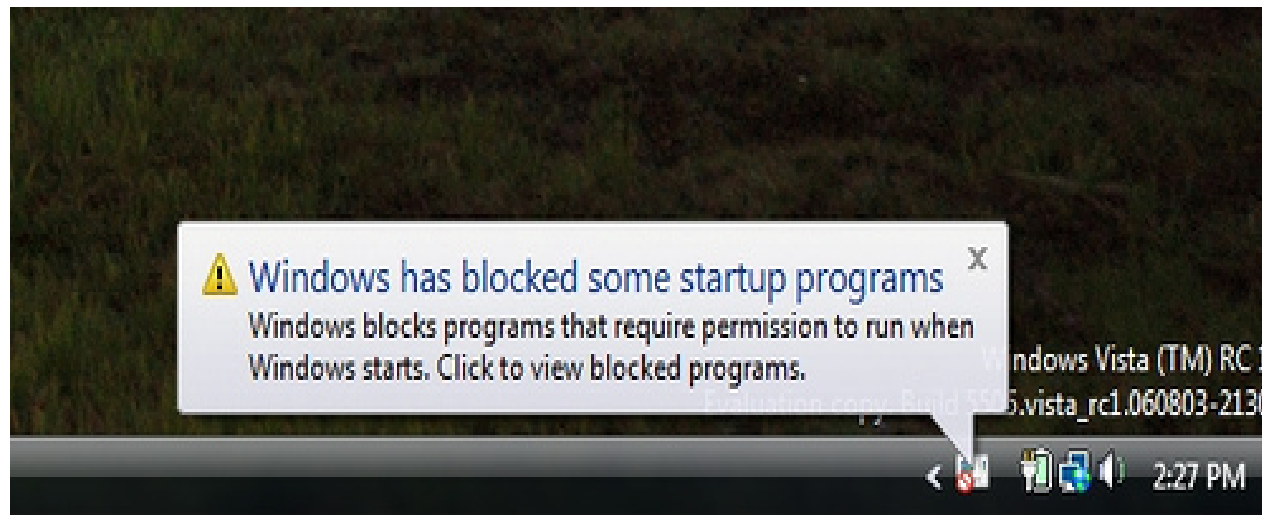


Image 2006, by Geoff Coupe



# Vista and Connectivity

New default ftp settings in Vista and IE7

[http://knowledgebase.allenpress.net/  
article.php?id=048](http://knowledgebase.allenpress.net/article.php?id=048)



# Vista and Interoperability

Works with many popular software applications

- Office products, Adobe, MathType, Wordperfect, TeX

Has some trouble with hardware

- Limited number of drivers available
- SP1 is slated to be released shortly



# Should you switch to Vista?

It depends

[www.clearification.com](http://www.clearification.com)

# Alternatives to Vista

1. Continue to run XP



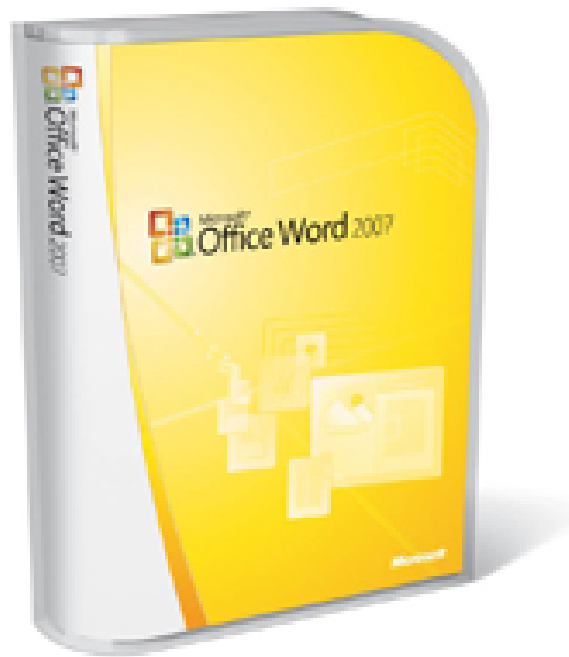
2. Linux



3. Switch to Mac

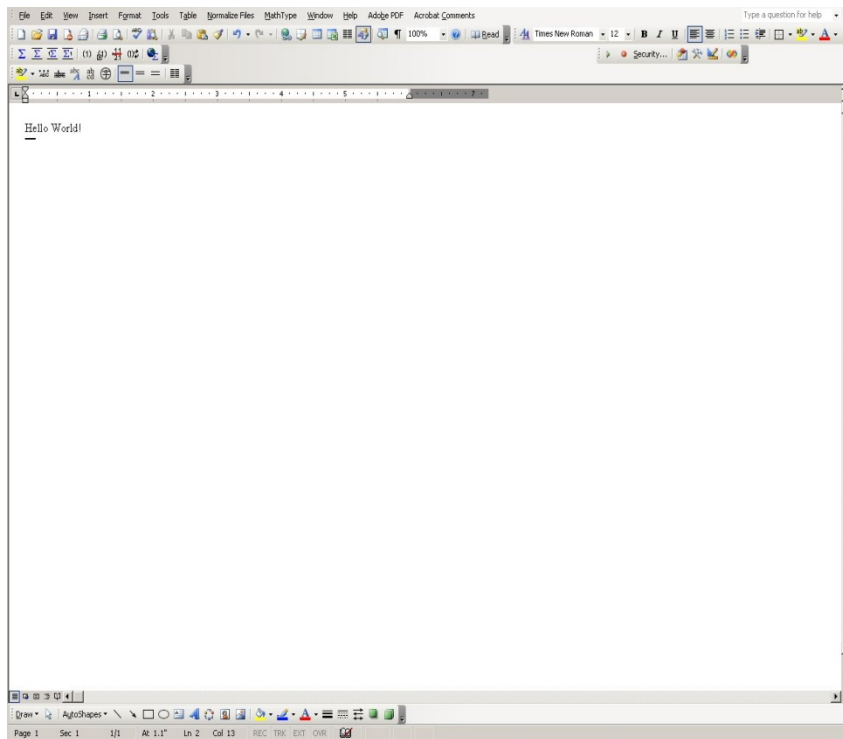


# Word 2007 — The Basics

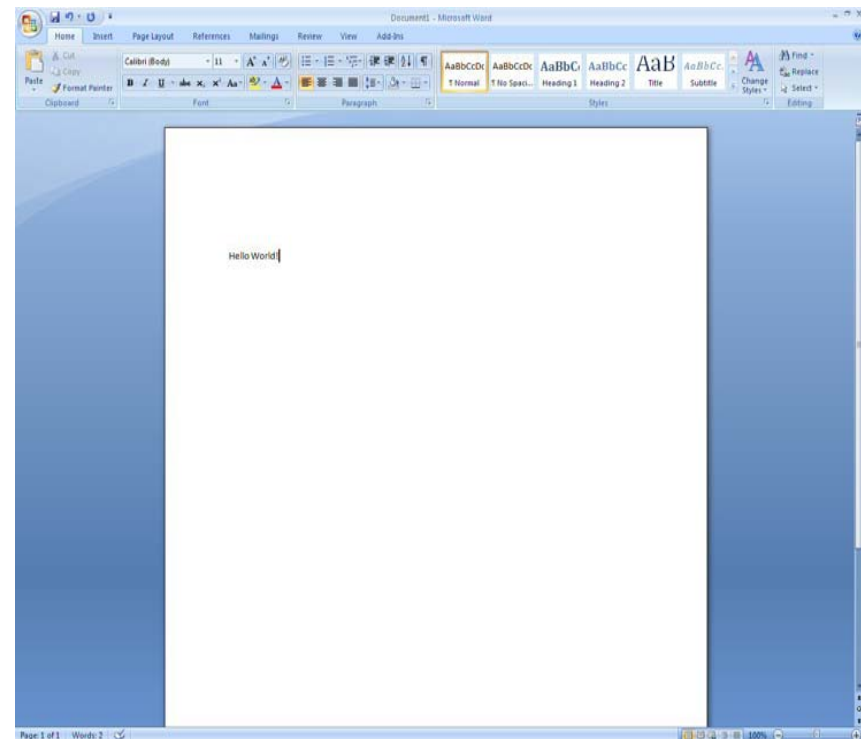


# Word 2007 — The Basics

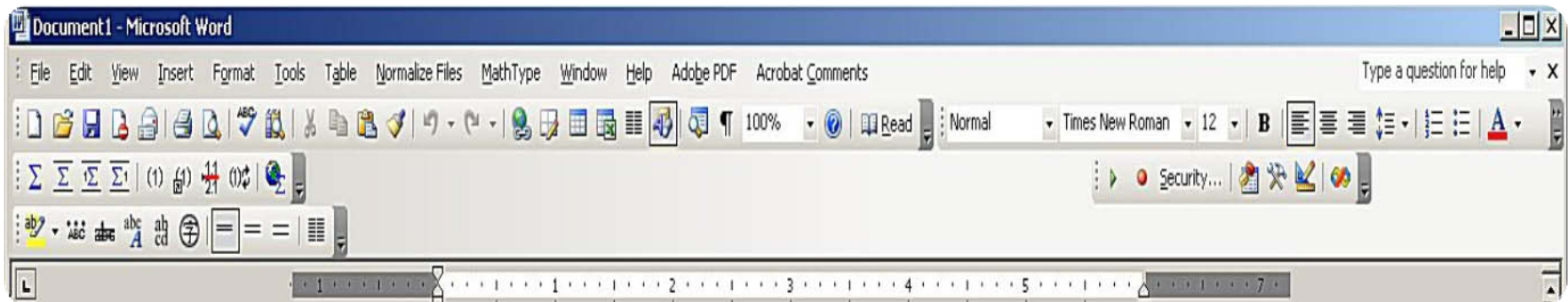
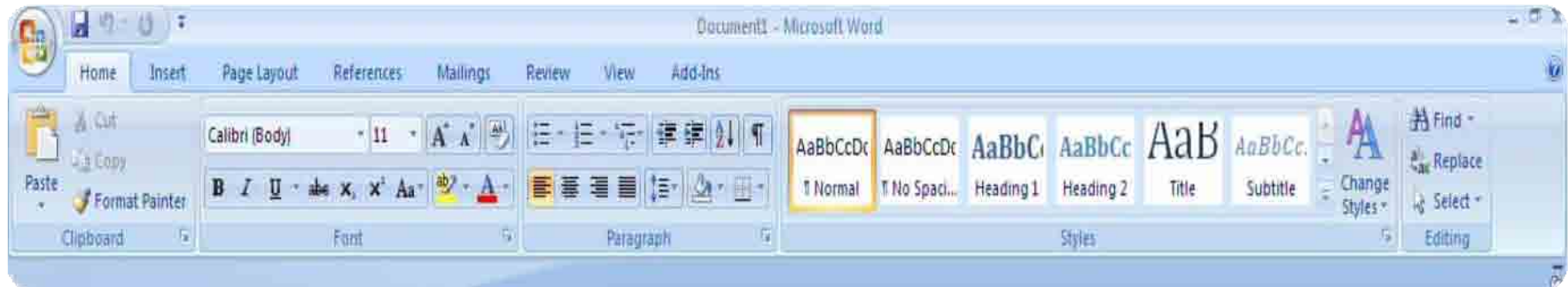
## Word 2003



## Word 2007



**Interface and functionality commands have been re-arranged and re-ordered.**

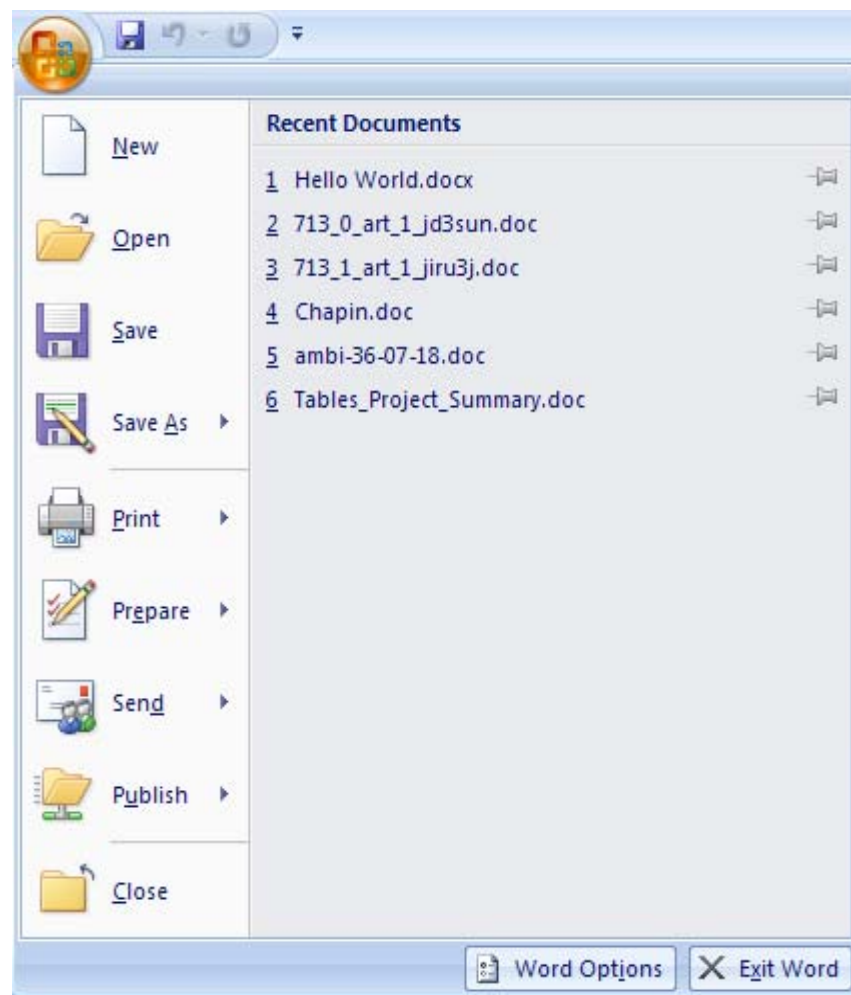


# Word 2007 — The Basics

## Pathways Redrawn

Reduces number of clicks to some popular functions

Can break macro commands





# Word 2007 — The Basics

New or improved functions for the editorial office?

Very few for STM editors

Redesign mainly affects access to functionality extant in earlier versions

## Word 2007 — XML

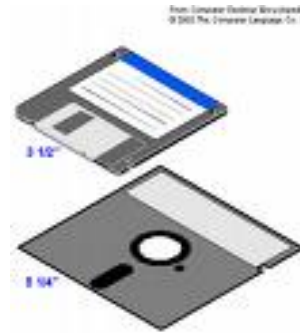
```
<?xml version="1.0" encoding="UTF-8" standalone="yes" ?>
- <w:document xmlns:ve="http://schemas.openxmlformats.org/markup-compatibility/2006" xmlns:o="urn:schemas-microsoft-com:office:office"
  xmlns:r="http://schemas.openxmlformats.org/officeDocument/2006/relationships" xmlns:m="http://schemas.openxmlformats.org/officeDocument/2006/math"
  xmlns:v="urn:schemas-microsoft-com:vml" xmlns:wp="http://schemas.openxmlformats.org/drawingml/2006/wordprocessingDrawing" xmlns:w10="urn:schemas-
  microsoft-com:office:word" xmlns:w="http://schemas.openxmlformats.org/wordprocessingml/2006/main"
  xmlns:wne="http://schemas.microsoft.com/office/word/2006/wordml">
- <w:body>
  <w:p w:rsidR="007051A9" w:rsidRDefault="007051A9" />
  <w:p w:rsidR="00903480" w:rsidRDefault="00903480" />
- <w:p w:rsidR="00903480" w:rsidRDefault="00903480">
  - <w:r>
    <w:t>Hello World!</w:t>
  </w:r>
</w:p>
<w:p w:rsidR="00C72FDE" w:rsidRDefault="00C72FDE" />
<w:p w:rsidR="00C72FDE" w:rsidRDefault="00C72FDE" />
<w:p w:rsidR="00C72FDE" w:rsidRDefault="00C72FDE" />
- <w:sectPr w:rsidR="00C72FDE" w:rsidSect="007051A9">
  <w:pgSz w:w="12240" w:h="15840" />
  <w:pgMar w:top="1440" w:right="1440" w:bottom="1440" w:left="1440" w:header="720" w:footer="720" w:gutter="0" />
  <w:cols w:space="720" />
  <w:docGrid w:linePitch="360" />
</w:sectPr>
</w:body>
</w:document>
```



# Why Does This Matter?

# Using Word 2007

- Promotes longevity of documents
- Promotes interoperability



# Using Word 2007

## Text

- Download Compatibility Pack for Office 2003  
<http://www.microsoft.com/downloads/details.aspx?familyid=941b3470-3ae9-4aee-8f43-c6bb74cd1466&displaylang=en>
- Advanced users who had customized Word '03 must re-customize Word '07

# Math in Word 2007

- MathType will work with Word '07
- MathType integrity is preserved by the "save" and "save as (lower version)" in Word 2007

MathType<sup>®</sup>



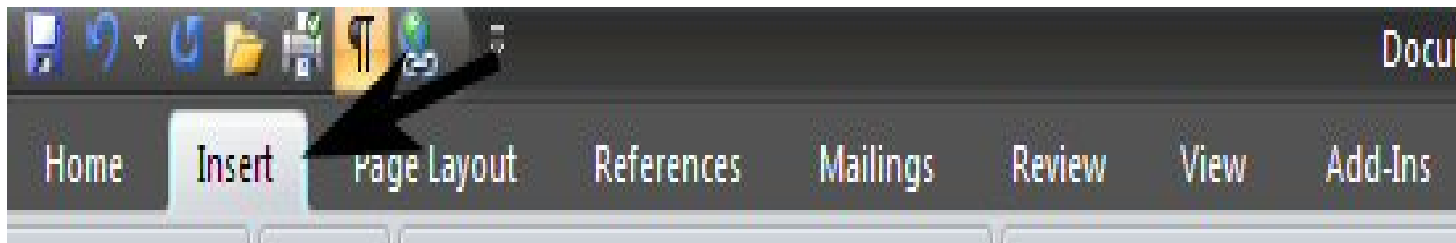
# Math in Word 2007

- Word '07s native equation editor saves equations as images.
- There are no plans for addition of Word '07 conversion to MathType.

MathType®

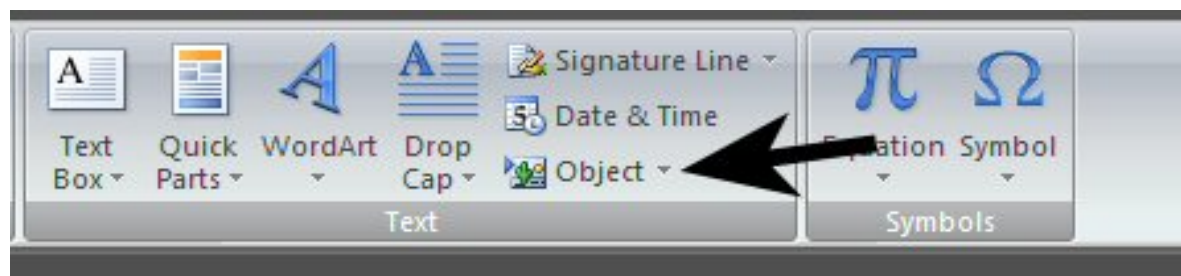


# Math Workaround



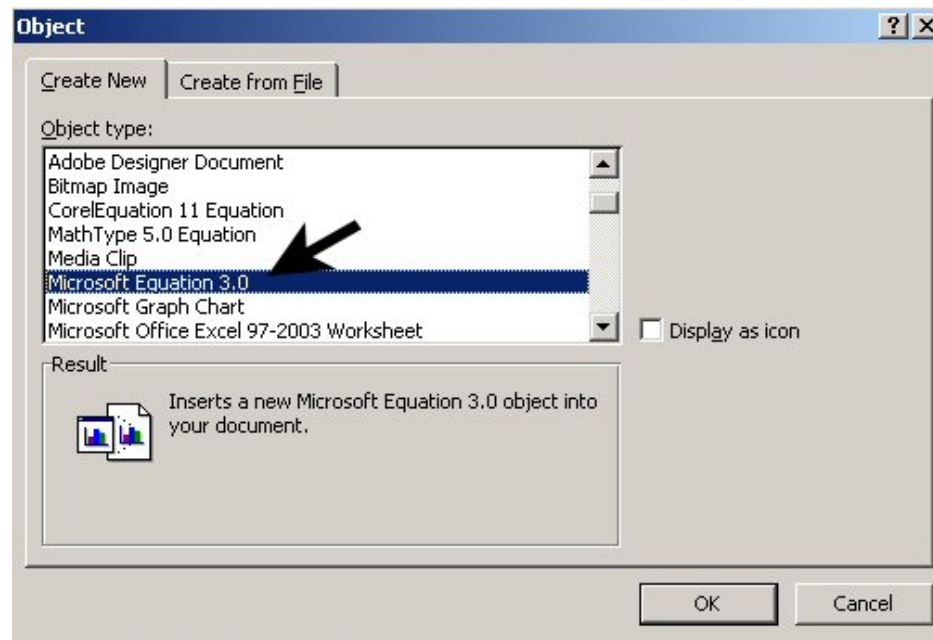
Select the “Insert” ribbon

# Math Workaround



Select “Object” from the “Insert” ribbon

# Math Workaround



Choose the earlier version of Word's  
Equation Editor



# Industry Analysis

- **AAAS**

***Science***

*Science* cannot at present accept files in Word 2007's .docx format.

- **Nature Publishing Group**

***Nature***

We currently cannot accept files saved in Microsoft Office 2007 formats. Equations and special characters (for example, Greek letters) cannot be edited and are incompatible with Nature's own editing and typesetting programs.

- **Blackwell Publishing**

***Basin Research***

Unfortunately, the journal cannot accept Microsoft Word 2007 documents until such time as a stable production version is released. Please use Word's 'Save As' option therefore to save your document as an older (.doc) file type.



# Industry Analysis

- **Wiley**

- Diagnostic Cytopathology***

- Please note: This journal does not accept Microsoft WORD 2007 documents at this time. Please use WORD's "Save As" option to save your document as an older (.doc) file type.

- **Oxford Journals**

- Bioinformatics***

- Please note: This journal does not accept Microsoft Word 2007 documents at this time. Please use Word's "Save As" option to save your document as an older (.doc) file type.

- **Springer-Verlag**

- Plant Disease***

- Please note: This journal does not accept Microsoft Word 2007 documents at this time. Please use Word's "Save As" option to save your document as an older (.doc) file type.



# Questions?